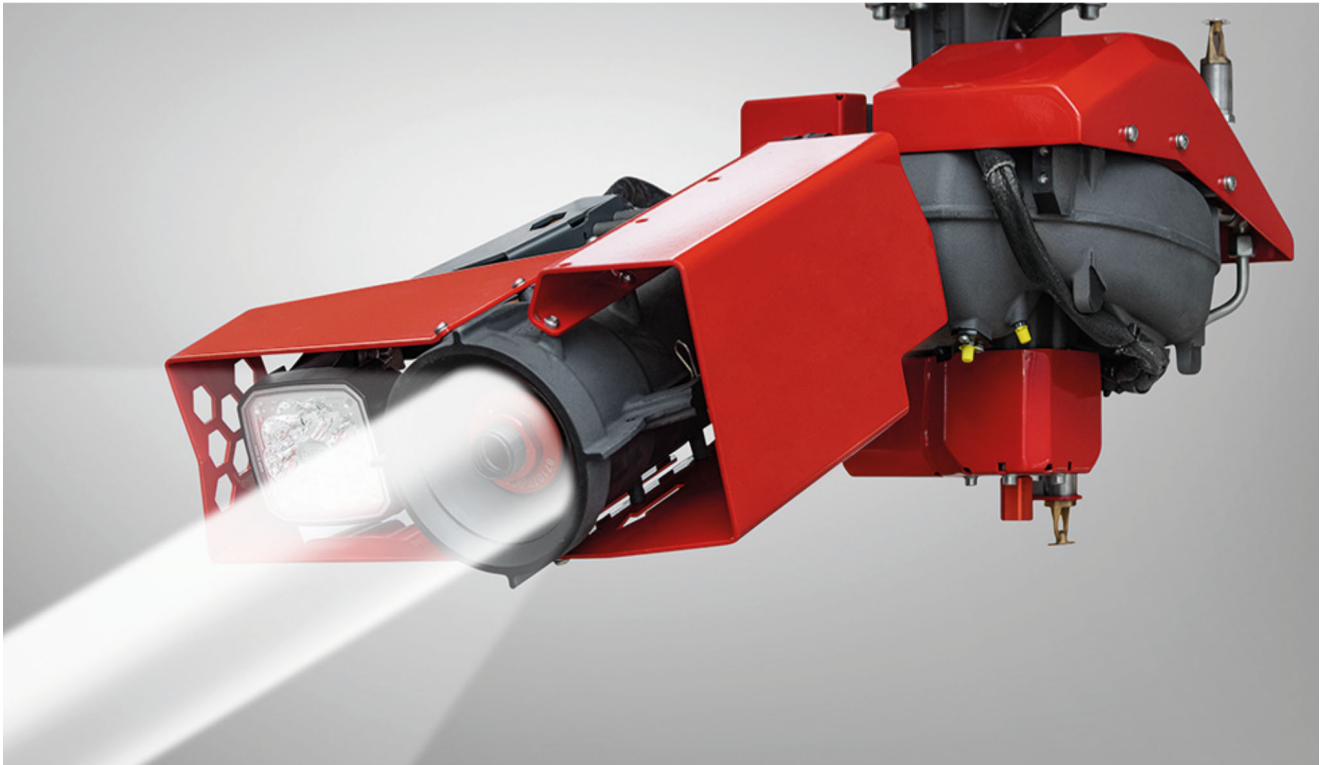


# RPC Turret RM35C

## Turret for Fixed Fire-fighting Systems



### Description

---

The RPC Turret RM35C is a compact, electronically controlled turret for protecting storage areas, waste bunkers, airplane hangars, helicopter landing sites etc. The turret is available as a water, foam, dry powder, or combined foam/powder monitor (ChemCore).

### Advantages

---

#### High flow rates

- Water or water-foam compound mixture:  
1,500 to 4,750 l/min at 10 bar  
[400 to 1,255 gpm at 145 psi]
- Dry powder:  
up to 40 kg/s at 14 bar  
[up to 88 lbs/s at 200 psi]
- ChemCore nozzle:  
up to 4,750 l/min at 14 bar water and  
10 kg/s dry powder  
[up to 1,255 gpm at 200 psi water and  
22 lbs/s dry powder]

#### Suitable for various extinguishing agents

- Water
- CAFS (compressed air foam)
- Foam (with/without foam barrel)
- Dry powder
- Water and dry powder combined (ChemCore)

#### Compact design

- It is ideal for tight installations thanks to its compact design.

#### Turret control

- Automatic control via infrared system
- Manual control: easy & intuitive
  - Portable joystick remote control with waist strap for operating up to six turrets
  - Tablet-remote control unit

#### Automatic control

- By linking with an infrared temperature monitoring system, the turret can be automatically directed at the seat of the fire and extinguish with pinpoint precision.

#### Oscillating function

- The turret traces a rectangle, the size and position of which are freely definable, and enables as a result fully automatic operation for extensive extinguishing.

# RPC Turret RM35C

## Turret for Fixed Fire-fighting Systems



### Technical Data

Drive	Electric motors (12 V / 24 V)
Material	Corrosion-resistant alloy, dark gray, HC-coated
Rotation Range	Max. 360° (-180° / +180°)
Swivel Range	Max. -90° to +90° (without design cover)
Connection	Flange DN80, vertical
Nozzles	HSD3500: O-stream nozzle, maximum flow 3,500 l/min at 10 bar (925 gpm at 145 psi) Optional: HSD4800: O-stream nozzle, maximum flow 4,750 l/min at 10 bar (1,255 gpm at 145 psi)
Jet adjustment	Electrical adjustment for full/spray jet (four levels)
Dry powder nozzle	Optional, maximum output 40 kg/s (88 lbs/s)
ChemCore Nozzle	Optional, integrated combined water/dry powder O-stream nozzle maximum 4,750 l/min (1,255 gpm) water and 10 kg/s (22 lbs/s) dry powder
Control system	Electronic control via CAN-bus 2.0
Path measurement	Mechanical rotary encoder
Spotlight	LED (1200lm)
Dimensions	LxWxH: 910 x 520 x 425 mm (35.8 x 20.4 x 16.7 in)
Weight	Approx. 42 kg (93 lbs)
Operating temperature	-20 °C to +70 °C (-4°F to 158°F)

### Protection Unit

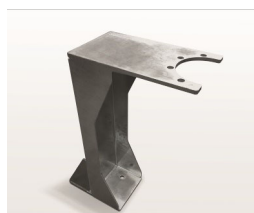
For additional turret protection in harsh environments with high dust exposure a protection unit for the RPC Turret RM35C is available. Within a short time the turret is moved into attack position by moving forwards and thereby pushing the gate upwards.

### Accessories



#### RPC Turret Remote Control

There exist two models of the remote control unit for the operation of turrets in fixed fire-fighting systems: a purely cable-operated unit and a combined cable/wireless unit. Up to six turrets in one CAN-bus system can be operated with this control unit. There is also an ATEX version available.



#### Console

Due to different installation conditions (wall-, ceiling- or ground-mounting) a variety of prefabricated consoles is available.

### Contact

Rosenbauer Brandschutz GmbH  
Paschinger Straße 90  
4060 Leonding, Austria  
Tel.: + 43 732 6794-0  
Fax: + 43 732 6794-91  
E-Mail: [stationary@rosenbauer.com](mailto:stationary@rosenbauer.com)

[www.rosenbauer.com](http://www.rosenbauer.com)

Follow us on       